
Dialogic modem driver installation and configuration guide

June 1, 2009



Omtool, Ltd.

6 Riverside Drive
Andover, MA 01810
Phone: +1/1 978 327 5700
Toll-free in the US: +1/1 800 886 7845
Fax: +1/1 978 659 1300

Omtool Europe

25 Southampton Buildings
London
WC2A 1AL
United Kingdom
Phone: +44/0 20 3043 8580
Toll-free in the UK: +44/0 80 0011 2981
Fax: +44/0 20 3043 8581

Web: <http://www.omtool.com>

© 2009 by Omtool, Ltd. All rights reserved. Omtool™, AccuRoute® and the Company logo are trademarks of the Company. Trade names and trademarks of other companies appearing in this document are the property of their respective owners.

Omtool product documentation is provided as part of the licensed product. As such, the documentation is subject to the terms outlined in the End User License Agreement. (You are presented with the End User License Agreement during the product installation. By installing the product, you consent to the terms therein.)

Permission to use the documentation is granted, provided that this copyright notice appears in all copies, use of the documentation is for informational and non-commercial or personal use only and will not be copied or posted on any network computer or broadcast in any media, and no modifications to the documentation are made. Accredited educational institutions may download and reproduce the documentation for distribution in the classroom. Distribution outside the classroom requires express written permission. Use for any other purpose is expressly prohibited by law.

Omtool and/or its suppliers make no guaranties, express or implied, about the information contained in the documentation. Documents and graphics contained therein could include typographical errors and technical inaccuracies. Omtool may make improvements or changes to the documentation and its associated product at any time.

Omtool support and sales

Online resources

The Omtool web site provides you with 24-hour access to documentation, software updates and other downloads, and detailed technical information that can help you troubleshoot issues. Go to <http://www.omtool.com/support> and log in using your customer number. Then click one of the following:

- **KNOWLEDGE BASE** to access technical articles.
- **DOWNLOADS & DOCS** to access online documentation, software updates, and downloads.

Customer service and technical support

Contact Omtool Customer Service or Technical Support using any of the following methods:

- **Phone:** 888 303 8098 (toll-free in the US)
- **Fax:** 978 659 1301
- **E-mail:** customerservice@omtool.com or support@omtool.com

Technical support requires an active support contract. For more information, go to <http://www.omtool.com/support/entitlements.cfm>.

Sales, consulting services, licenses, and training

Contact Omtool Sales using any of the following methods:

- **Phone:** 978 327 5700 or 800 886 7845 (toll-free in the US)
- **Fax:** 978 659 1300
- **E-mail:** sales@omtool.com

Contents

Section 1: Introduction

Section 2: Installing and configuring TR1034 and TruFax series boards

Requirements	2-1
Omtool software requirements	2-1
Driver requirement.....	2-1
Fax board requirement.....	2-2
Additional requirements.....	2-2
Downloading Brooktrout drivers.....	2-2
Preparing existing Modem Servers for upgrade.....	2-2
Removing the channels	2-3
Removing Brooktrout TrxStream SDK 3.x drivers and deleting Brooktrout DLLs	2-3
Removing Brooktrout TrxStream SDK v.5.x drivers.....	2-4
Installing Brooktrout System Software	2-4
Configuring Brooktrout TR1034 and TruFax series boards using Brooktrout Configuration Tool.....	2-5
Detecting and configuring fax board channels.....	2-6

Section 3: Installing and configuring TR114 series boards

Requirements	3-1
Omtool software requirements	3-1
Driver requirement.....	3-1
Fax board requirement.....	3-2
Additional requirements.....	3-2
Downloading Brooktrout drivers.....	3-2
Installing and configuring.....	3-2
Configuring Brooktrout TR114	3-3
Setting the maximum page size.....	3-3

Section 4: Installing and configuring SR140 module

Requirements	4-1
Omtool software requirements	4-1
Driver requirement.....	4-1
Gateway requirement.....	4-2
Additional requirements.....	4-2
Installing BrookTrout SR140 module	4-2
Downloading driver.....	4-2
Installing Brooktrout v5.2.2 drivers	4-3
Activating the License	4-5
Applying the license.....	4-7
Configuring Brooktrout SR140	4-8
Configuring SR40.....	4-8
Additional SIP configuration	4-9
Additional H.323 configuration.....	4-9
Setting the maximum page size.....	4-10

Section 5: Testing

Testing Dialogic fax board/module	5-1
---	-----

Section 6: Troubleshooting

Modem services do not start when drivers are installed in non-default location	6-1
When sending documents with greater than 30 pages the message goes to the Failure queue.....	6-2
While installing Boston v5.2.2 drivers after uninstalling Boston v5.1.3 drivers Dialogic services do not start	6-2

Section I: Introduction

This guide contains instructions on installing and configuring the following Dialogic modem drivers. It is written for systems administrators with detailed knowledge of the Omtool server and one or all of the following modem drivers.

- TRI034 and TruFax RoHS series fax boards
- TRI14 series fax boards
- SR140 module (virtual board)

Each of the chapters in this book discusses in details the procedure involved in installing and configuring the modem drivers.

- For installation and configuration instructions of TRI034 and TruFax modem board, see [Installing and configuring TRI034 and TruFax series boards](#) (2-1).
- For installation and configuration instructions of I14 modem board, see [Installing and configuring TRI14 series boards](#) (3-1).
- For installation and configuration instructions of SR140 virtual boards, see [Installing and configuring SR140 module](#) (4-1)

Section 2: Installing and configuring TR1034 and TruFax series boards

This section includes:

- [Requirements](#) (2-1)
- [Downloading Brooktrout drivers](#) (2-2)
- [Preparing existing Modem Servers for upgrade](#) (2-2)
- [Installing Brooktrout System Software](#) (2-4)
- [Configuring Brooktrout TR1034 and TruFax series boards using Brooktrout Configuration Tool](#) (2-5)

Requirements

This section includes:

- [Omtool software requirements](#) (2-1)
- [Driver requirement](#) (2-1)
- [Additional requirements](#) (2-2)

Omtool software requirements

Omtool software requirements are as follows:

- AccuRoute v2.1/Genifax v3.4 or higher

If you are using AccuRoute v2.1 or Genifax 3.4, you must install Modem Server v2.01 Service Pack (build 13).
- Telco connector - To configure the Omtool Message Server for faxing messages, a Telco connector is required. This is a licensed connector. For more information on Telco connectors, contact Omtool sales at sales@omtool.com

Driver requirement

Driver requirements is:

- Brooktrout 5.2.2 or higher

Fax board requirement

- Brooktrout Fax Board TR1034 series or TruFax RoHS

Additional requirements

In addition to meeting the requirements listed above, you need the following:

- Proper T1 fax card on the gateway
- Enough memory to run the desired amount of channels

Downloading Brooktrout drivers

To download Brooktrout v5.2.2 drivers:

- 1 Go to <http://www.omtool.com/support> and log in using your customer number.
- 2 Click **DOWNLOADS & DOCS** in the navigation pane on the left. (It is located under **Support**.)
- 3 Open the **AccuRoute** or **Genifax** menu, go to **Drivers** section, and locate the download.
- 4 Click the download link to begin download.
The zip file containing the .msi file and the `Release Notes` opens.
- 5 Select the files and click **EXTRACT**. Browse to the location where you want to save the file.
- 6 Click **EXTRACT**. The files are extracted and saved to the location you specified.
- 7 Name this directory the Boston directory.

Preparing existing Modem Servers for upgrade

Note The procedures in this section must be completed on all Modem Servers. For a Modem Server being set up for first-time use, skip this section and go to [Installing Brooktrout System Software and configuring the fax board](#).

Removing the channels

Important You need to remove channels when upgrading from SDK 3.x drivers only. If you are using a higher version of the SDK, go to [Removing Brooktrout TrxStream SDK v.5.x drivers \(2-4\)](#)

Using the Omtool Server Administrator, delete the channels from the Telco connector. For environments with multiple Telco connectors, repeat this procedure for all Telco connectors on the Omtool server.

To remove the channels from an Omtool server:

- 1 Start **Omtool Server Administrator**.
- 2 Click **CONNECTORS** in the console tree.
- 3 Double click the **TELCO** connector in the details pane to open the **Properties** page.
- 4 Click the **CHANNELS** option.
- 5 Highlight the channels and click **DELETE**.
- 6 Click **YES** on the confirmation message.
- 7 Click **OK** to save your changes.

Removing Brooktrout TrxStream SDK 3.x drivers and deleting Brooktrout DLLs

Important You must remove Brooktrout TrxStream SDK drivers if they are older than v5.2.2.

Go to the system where a TR1034 or TruFax series fax board is installed, and remove Brooktrout TrxStream SDK and Brooktrout DLLs using the procedure below.

Note Complete these procedure on all systems where TR1034 and TruFax series fax boards are installed.

To remove Brooktrout TrxStream SDK v3.x:

- 1 Stop and disable the **Omtool Modem Manager** service.
- 2 Start **ADD/REMOVE PROGRAMS**.
- 3 Highlight **BrookTrout TrxStream Drivers SDK 3.x** and click **CHANGE/REMOVE**.
- 4 Click **OK** to remove the **Brooktrout TrxStream Drivers SDK 3.x**.
- 5 Click **FINISH** and then click **CLOSE**.

To delete Brooktrout DLLs:

- 1 Locate the Windows system32 directory and delete the following files: [bostdll.d.DLL](#), [bostdlls.DLL](#)
- 2 Locate and delete [Oem#.INF](#) and [Oem#.PNF](#). (A number replaces # in the actual filename.)
 - a Start **Windows Explorer** and go to **\\WINNT** or **\\WINDOWS**.
 - b Go to **\\INF**.
 - c Right click on **\\inf** folder and select **SEARCH NOW**.
 - d In the **A WORD OR PHRASE IN THE FILE SEARCH** field enter **Brooktrout**.
 - e Click **SEARCH NOW**.
 - f The search returns **Oem#.INF** and **Oem#.PNF**.
 - g Delete both files.
- 3 Reboot the system.
- 4 Continue to [Installing Brooktrout System Software](#) (2-4).

Removing Brooktrout TrxStream SDK v.5.x drivers

Important You must remove Brooktrout TrxStream SDK drivers if they are older than v5.2.2.

To remove an earlier version of the 5.x drivers:

- 1 Stop and disable the **Omtool Modem Manager** service.
- 2 Start **ADD/REMOVE PROGRAMS**.
- 3 Highlight **Brooktrout System Software** and click **REMOVE**.
- 4 Click **OK** to remove the driver.
- 5 Click **FINISH** and then click **CLOSE**.
- 6 Continue to [Installing Brooktrout System Software](#) (2-4).

Installing Brooktrout System Software

Using the following procedure, install the Brooktrout System Software. You must install the Brooktrout System Software, and configure the board using the Brooktrout Configuration Tool in all systems where TR1034 and TruFax series fax boards are installed.

To install Brooktrout System Software:

- 1 Verify that the **Omtool Modem Manager** service is not running.
- 2 Go to the location where you extracted the ZIP file and locate the Boston directory.
- 3 Double click `boston5-2-2.msi`.
The **Welcome** page opens.
- 4 Click **NEXT**. The **License Agreement** page opens.
- 5 Read the agreement and if you agree, select **I accept the terms in the license agreement**. Click **NEXT**.
The **Destination Folder** page opens.
- 6 Modify the destination location if necessary and click **NEXT**.
- 7 Click **INSTALL**.
- 8 When installation is complete, click **FINISH**.
- 9 Reboot the server.

Configuring Brooktrout TR1034 and TruFax series boards using Brooktrout Configuration Tool

You must install the Brooktrout System Software, and configure the board using the Brooktrout Configuration Tool in all systems where TR1034 and TruFax series fax boards are installed.

To configure the board using the Brooktrout Configuration Tool:

- 1 Click **START > ALL PROGRAMS > BROOKTROUT > BROOKTROUT CONFIGURATION TOOL**.

Note If the Configuration Tool cannot detect the boards, try changing the PCI slot or the module number and see if the board is now detected.

- 2 Open the **PROTOCOL OPTIONS** menu and select the appropriate protocol for the board.
- 3 Verify that the board is configured correctly. (The telephone service provider supplies the correct configuration information.)
 - ▶ **TI/ISDN/PRI** - Verify the Switch Type, Protocol (Variant), Line Coding, Line type (Framing), and Max DID Digits settings.
 - ▶ **TI Robbed Bit** - Verify the Line type (Framing), Line Coding, and Max DID Digits settings.
- 4 Set the `Maximum Number of Pages` property value to `200` following instructions in [Setting the maximum page size](#). The default value is 30. You must change this property value for messages larger than 30 pages to succeed.

- 5 Click **APPLY**.
- 6 Click **START > ALL PROGRAMS > ADMINISTRATIVE TOOL > COMPUTER MANAGEMENT**.
- 7 Select **DEVICE MANAGER** in the console tree and expand **COMPUTER TELEPHONY** in the details pane.
- 8 Double click **TRXSTREAM BOARD** in the details pane and click the **DRIVER** option.
- 9 Verify that the **Driver Version** is **5.4.0.12** or higher.

Note The driver version for is Boston 5.2.2 driver is shown as v5.4.0.12.

- 10 Exit **Device Manger**.

Setting the maximum page size

To configure the maximum page size using the Brooktrout Configuration Tool:

- 1 Click **START > ALL PROGRAMS > BROOKTROUT > BROOKTROUT CONFIGURATION TOOL**.
- 2 Select **BTCALL PARAMETERS (ALL BOARDS)**.
- 3 In the **Advances Settings** section, go to the **MAXIMUM NUMBER OF PAGES** option.
- 4 Set the value to **200**.
- 5 Save your changes.
- 6 Click **APPLY** to make the Brooktrout server read your changes.

Detecting and configuring fax board channels

Using the Omtool Server Administrator, detect and configure the channels in the Telco connector.

Note For environments with multiple Telco connectors, detect the channels on the Modem Server using the appropriate Telco connector.

To detect and configure the channels:

- 1 Start **Omtool Server Administrator**.
- 2 Click **CONNECTORS** in the console tree.
- 3 Double click the **TELCO** connector in the details pane, and click **DETECT CHANNELS**. The **Detect Channels** page opens.
- 4 Enter the name or IP address of the Modem Server and click **DETECT NOW**.

- 5** Double click each channel and reset the channel properties. For channels that must be configured to capture DID data for inbound faxes, select Capture DNIS.
- 6** Click **OK**.
- 7** Repeat this procedure until all TR1034 and TruFax channels on the Omttool server and Remote Modem Servers are detected and configured.

Section 2: Installing and configuring TR1034 and TruFax series boards

Section 3: Installing and configuring TRI I4 series boards

This section includes:

- [Requirements](#) (3-1)
- [Downloading Brooktrout drivers](#) (3-2)
- [Installing and configuring](#) (3-2)

Requirements

This section includes:

- [Omtool software requirements](#) (3-1)
- [Driver requirement](#) (3-1)
- [Additional requirements](#) (3-2)

Omtool software requirements

Omtool software requirements are as follows:

- AccuRoute v2.1/Genifax v3.4 or higher

If you are using AccuRoute v2.1 or Genifax 3.4, you must install Modem Server v2.01 Service Pack (build 13).
- Telco connector - To configure the Omtool Message Server for faxing messages, a Telco connector is required. This is a licensed connector. For more information on Telco connectors, contact Omtool sales at sales@omtool.com

Driver requirement

Driver requirements is:

- Brooktrout 4.3 or higher

Fax board requirement

- Brooktrout Fax Board TR114 series

Additional requirements

In addition to meeting the requirements listed above, you need the following:

- Proper T1 fax card on the gateway
- Enough memory to run the desired amount of channels

Downloading Brooktrout drivers

To download Brooktrout v4.3 drivers:

- 1 Go to <http://www.omtool.com/support> and log in using your customer number.
- 2 Click **DOWNLOADS & DOCS** in the navigation pane on the left. (It is located under **Support**.)
- 3 Open the **AccuRoute** or **Genifax** menu, go to **Drivers** section, and locate the download.
- 4 Click the download link to begin download.
The zip file containing the .msi file and the `Release Notes` opens.
- 5 Select the files and click **EXTRACT**. Browse to the location where you want to save the file.
- 6 Click **EXTRACT**. The files are extracted and saved to the location you specified.
- 7 Name this directory the Boston directory.

Installing and configuring

For information on how to install and configure TR114 series boards, see page 46 of the [AccuRoute v2.0.1 installation guide](#).

Configuring Brooktrout TRI I4

This section includes:

[Setting the maximum page size](#) (3-3)

Setting the maximum page size

To configure the maximum page size:

- 1 Navigate to the **x:\BFAX\TEST**.
- 2 Open `btcall.cfg` parameter for editing using a text editor like Notepad.
- 3 Go to `property max_pagelist 30` and change the value to `200`.
- 4 Save the file.
- 5 Start Modem Service Manager.

Section 4: Installing and configuring SR I 40 module

This section includes:

- [Requirements](#) (4-1)
- [Installing BrookTrout SR I 40 module](#) (4-2)
- [Configuring Brooktrout SR I 40](#) (4-8)

For information on BrookTrout T.38 SR I 40, go to <http://www.cantata.com/products/sr I 40/pdf/SR I 40.pdf>

Requirements

This section includes:

- [Omtool software requirements](#) (4-1)
- [Driver requirement](#) (4-1)
- [Gateway requirement](#) (4-2)
- [Additional requirements](#) (4-2)

Omtool software requirements

Omtool software requirements are as follows:

- AccuRoute v2.1/Genifax v3.4 or higher

If you are using AccuRoute v2.1 or Genifax 3.4, you must install Modem Server v2.01 Service Pack (build 13).
- Telco connector - To configure the Omtool Message Server for faxing messages, a Telco connector is required. This is a licensed connector. For more information on Telco connectors, contact Omtool sales at sales@omtool.com

Driver requirement

Driver requirements is:

- Brooktrout 5.2.2 or higher

Gateway requirement

For a list of supported gateways, go to <http://www.cantata.com/interop/fax/>

Additional requirements

In addition to meeting the requirements listed above, you need the following:

- Proper T1 fax card on the gateway
- Enough memory to run the desired amount of channels

Installing BrookTrout SR140 module

This section includes:

- [Downloading driver](#) (4-2)
- [Installing Brooktrout v5.2.2 drivers](#) (4-3)
- [Activating the License](#) (4-5)
- [Applying the license](#) (4-7)

Downloading driver

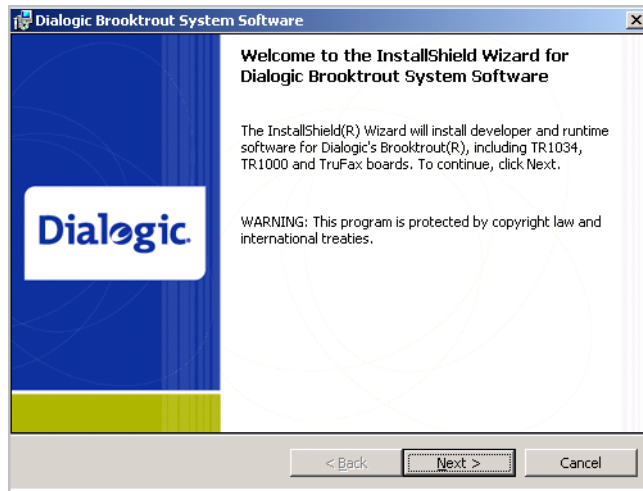
To download Brooktrout v5.2.2 drivers:

- 1 Go to <http://www.omtool.com/support> and log in using your customer number.
- 2 Click **DOWNLOADS & DOCS** in the navigation pane on the left. (It is located under **Support**.)
- 3 Open the **AccuRoute** or **Genifax** menu, go to **Drivers** section, and locate the download.
- 4 Click the download link to begin download.
The zip file containing the .msi file and the `Release Notes` opens.
- 5 Select the files and click **EXTRACT**. Browse to the location where you want to save the file.
- 6 Click **EXTRACT**. The files are extracted and saved to the location you specified.
- 7 Name this directory the Boston directory.

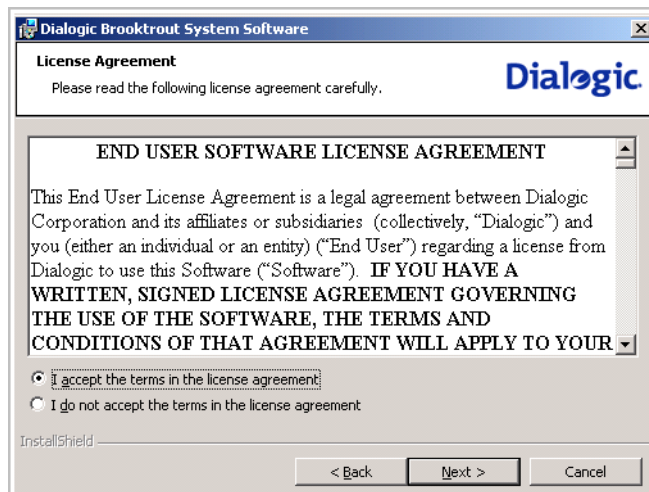
Installing Brooktrout v5.2.2 drivers

To install Brooktrout v5.2.2 drivers:

- 1 Locate the Boston directory.
- 2 Double-click `BOSTON5-2-2.MSI`. The **Welcome** page opens.

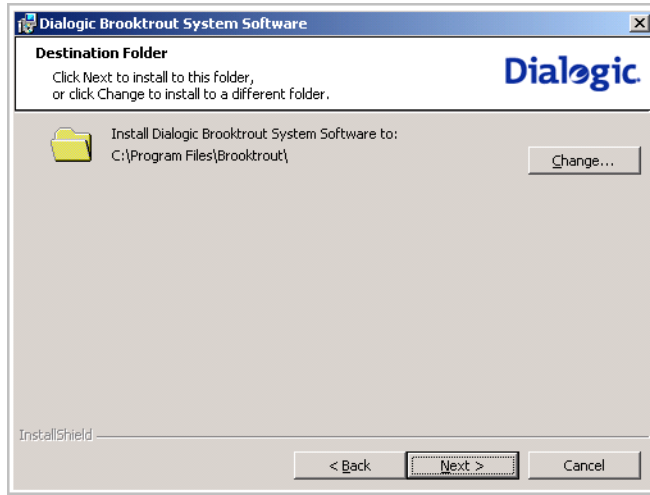


- 3 Click **NEXT**. The **License Agreement** page opens. Read

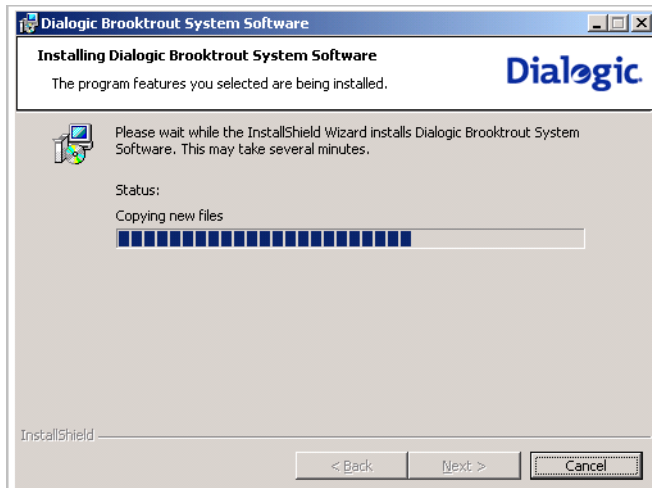


- 4 Read the license agreement and select **I accept the terms in the license agreement** option.

- 5 Click **NEXT**. The **Destination Folder** page opens.

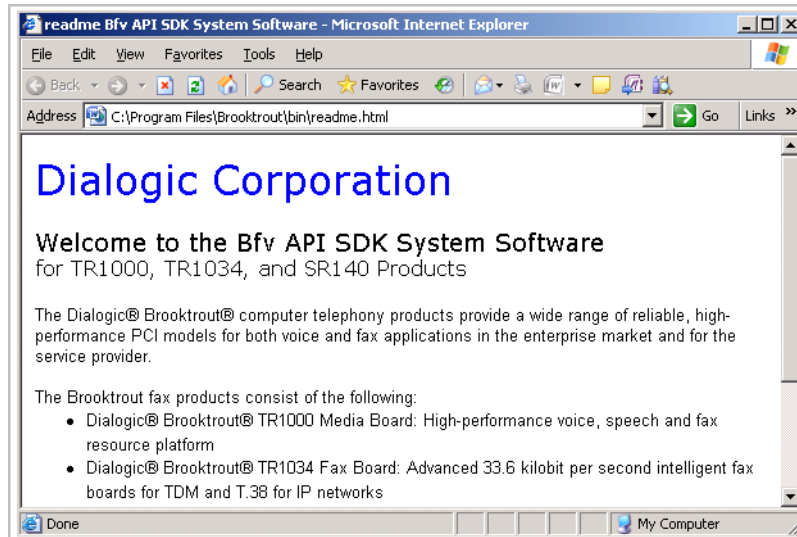


- 6 Modify the destination location if necessary and click **NEXT**.
- 7 Click **NEXT** to begin the installation.



- 8 When installation is complete, you see the **InstallShield Wizard Completed** page.

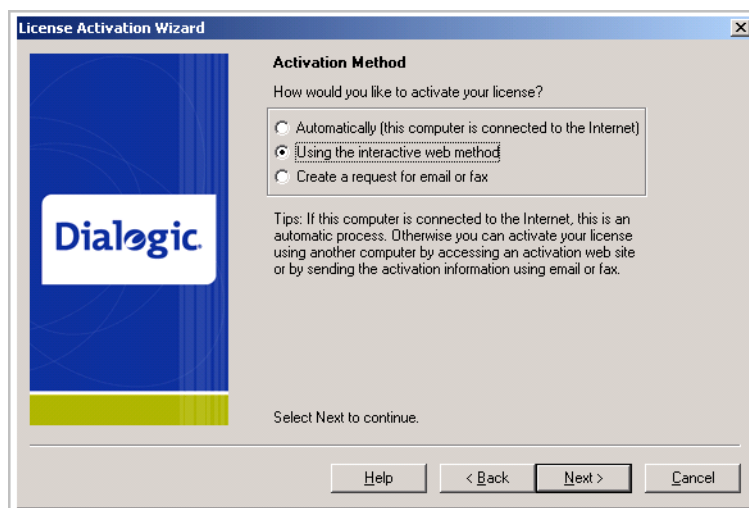
- 9 Click **FINISH**. The Readme opens.



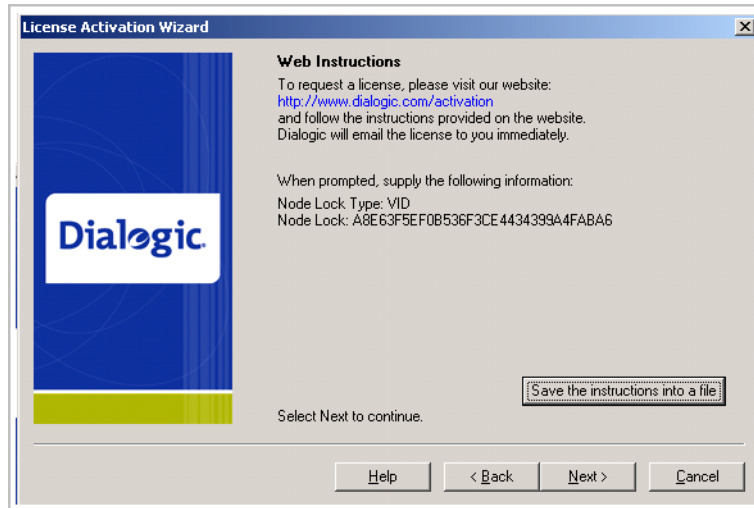
Activating the License

To activate the license

- 1 Click **START >PROGRAM FILES > BROOKTROUT LICENSE MANAGER**. The **BrookTrout License Manager** opens.
- 2 In the menu bar click **LICENSE >ACTIVATE LICENSE**. The License Activation wizard opens and you see the **Welcome** message.
- 3 Click **NEXT**. Select **Using the interactive web method**.



- 4 Click **NEXT**. You get the **Node Lock** value.

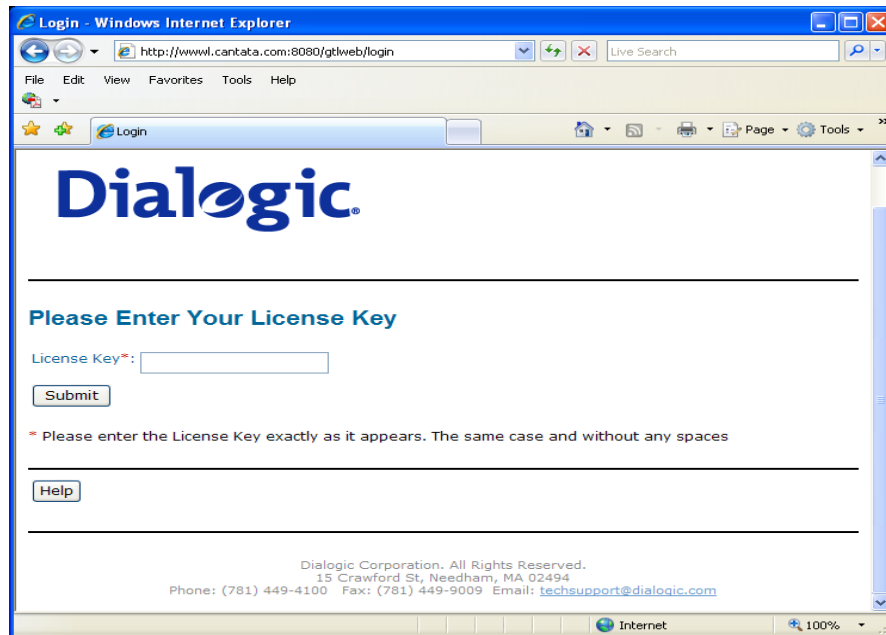
5 Click **Save the instructions into a file** option.**6** Click **NEXT**.**7** Browse and save the file to a known location.**8** Go to the location where you saved the file. Open the file.

The file contains the text similar to what is shown below and gives you the Node Lock value of your system:

```
To request a license, please visit our website:  
http://www.dialogic.com/activation  
and follow the instructions provided on the website.  
Dialogic will email the license to you immediately.
```

```
When prompted, supply the following information:  
Node Lock: [Node Lock value]
```


- 9 Open Internet Explorer and go to <http://www.dialogic.com/activation>.



- 10 In the **LICENSE KEY** text box, enter the License key and the Node Lock value of your system.

Important For the license key, contact customer support.

Brooktrout sends you the license for your BrookTrout SR140 module.

Note This license key will enable the Brooktrout SR140 fax feature on the system the node value was retrieved from. It cannot be transferred without assistance from Cantata.

- 11 Save the license file to the local drive of the system.

Applying the license

To apply the license

- 1 Launch the **Brooktrout License Manager**.
- 2 From the file menu option, select **LICENSE**.
- 3 Select **INSTALL LICENSE** drop down.
- 4 Browse to the license file you saved to the system.

Configuring Brooktrout SR140

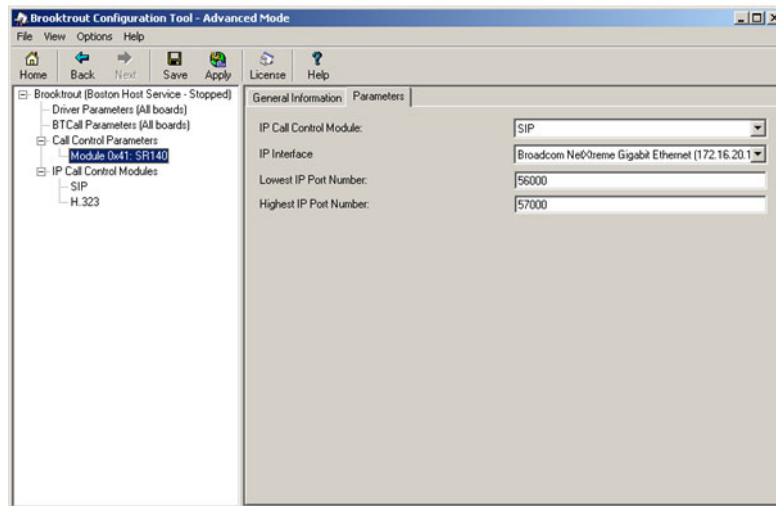
This section includes:

- [Configuring SR40](#) (4-8)
- [Additional SIP configuration](#) (4-9)
- [Additional H.323 configuration](#) (4-9)
- [Setting the maximum page size](#) (4-10)

Configuring SR40

To configure BrookTrout SR140

- 1 Click **START > PROGRAM FILES > BROOKTROUT CONFIGURATION TOOL**.
The **Configure IP Stack** page opens.
- 2 Select the protocol appropriate to your environment.
The **BrookTrout Configurations Tool** opens.



- 3 Expand **CALL CONTROL PARAMETERS**.
- 4 Select **MODULE0X41:SR140**.
- 5 In the right pane, click **PARAMETERS** option.
- 6 Verify that **IP Call Control Module** value is **SIP** or **H.323** (depending on which protocol is configured for your company).

- 7 Continue to additional configurations. You can configure SIP or H.323 but not both.

Additional SIP configuration

Follow the procedure below for additional SIP configuration.

- 1 Click **START > PROGRAM FILES > BROOKTROUT CONFIGURATION TOOL**.

The **BrookTrout Configurations Tool** opens.

- 2 Expand **IP CALL CONTROL MODULES**.

- 3 Select **SIP**.



- 4 In the right pane, select **IP PARAMETERS** option.

- 5 In the **SIP_DEFAULT_GATEWAY** add the IP address of your Cisco Gate followed by **5060** in the second field.

- 6 Select the **T.38 parameters** option

- 7 Set **MEDIA RENEGOTIATE DELAY OUTBOUND, MSEC** to **-1**.

- 8 In **Advanced settings**, change the **MAXIMUM T.38 VERSION** from **3** to **0**.

- 9 The prompt "Parameter Maximum Bit Rate, bps" value should not be greater than 14400 when "Maximum T.38 version" is 0. " is displayed.

- 10 Click **OK** and the **Maximum bit rate, bps** is automatically reset to **14400**.

Additional H.323 configuration

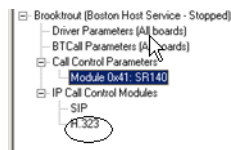
Follow the procedure below for additional H.323 configuration. If your environment is configured for SIP protocol, continue to the next section.

- 1 Click **START > PROGRAM FILES > BROOKTROUT CONFIGURATION TOOL**.

The **BrookTrout Configurations Tool** opens.

- 2 Expand **IP CALL CONTROL MODULES**.

- 3 Select **H.323**.



- 4 In the right pane, select **IP PARAMETERS** option.

- 5 Add the IP address of your Cisco Gateway in the **H323_DEFAULT_GATEWAY** followed by **1720**.

- 6 Add the IP address of your AccuRoute/Genifax Server in the **H323_LOCAL_IP_ADDRESS** followed by [1720](#).

Setting the maximum page size

Brooktrout modems have a known problem with sending document with greater than 30 pages. You must change the value of the `Maximum Number of Pages` property value to [200](#) in order to send messages greater than 30 pages successfully.

To configure the maximum page size using the Brooktrout Configuration Tool:

- 1 Click **START > ALL PROGRAMS > BROOKTROUT > BROOKTROUT CONFIGURATION TOOL**.
- 2 Select **BTCALL PARAMETERS (ALL BOARDS)**.
- 3 In the **Advances Settings** section, go to the **MAXIMUM NUMBER OF PAGES** option.
- 4 Set the value to [200](#).
- 5 Save your changes.
- 6 Click **APPLY** to make the Brooktrout server read your changes.

Section 5: Testing

After you have installed and configured the modem drivers, test to see that they are working properly

This section includes:

[Testing Dialogic fax board/module](#) (5-1)

Testing Dialogic fax board/module

To test the Dialogic fax board/module:

- 1** Stop Modem Manager Service.
- 1** Login to the system running the Modem server.
- 2** Navigate to:
C:\PROGRAM FILES\OMTOOL SERVER\TOOLS\MODEM\TOOLS\BROOKTROUT\CONFIG.
- 3** Copy **FAX.EXE** and **TEST.IPS**.
- 4** Paste the copied files to **C:\PROGRAM FILES\BROOKTROUT\CONFIG.**
- 5** To send a test fax, do the following:
 - a** Open a command prompt window.
 - b** Change directory to **C:\PROGRAM FILES\BROOKTROUT\CONFIG.**
 - c** Type `..\bin\firmload.bat` and press **ENTER**.
 - d** Type `fax -u 0 -s PhoneNumber test.ips` where `PhoneNumber` is the destination fax number.
 - e** Press **ENTER**.The test fax is delivered to the destination.

Section 6: Troubleshooting

This section includes:

[Modem services do not start when drivers are installed in non-default location](#) (6-1)

[When sending documents with greater than 30 pages the message goes to the Failure queue](#) (6-2)

[While installing Boston v5.2.2 drivers after uninstalling Boston v5.1.3 drivers Dialogic services do not start](#) (6-2)

Modem services do not start when drivers are installed in non-default location

Problem:

When Boston 5.x drivers are uninstalled and installed to a non-default location; the modem service does not start automatically and when it is manually started, it stops after sometime.

Solution:

The simplest way to handle this situation is to delete the following registry key:

HKEY_LOCAL_MACHINE\SOFTWARE\Omtool\Modem\Boston

Therefore, to restart the modem services automatically after reinstalling the driver to a new location, perform the procedure in the following order:

- Stop/disable the modem server
- Remove brooktrout drivers
- Reboot the system
- Install brooktrout drivers to new location
- Configure brooktrout drivers
- Delete registry key: HKEY_LOCAL_MACHINE\SOFTWARE\Omtool\Modem\Boston. Alternately, you can run [OmBt49CheckU.exe](#). or installing the Modem 2.03 update.
- Enable/restart the modem server

Deleting the key forces the modem server to detect the Brooktrout drivers and resets the registry by calling [OmBt49CheckU.exe](#). Reinstalling the modem Update always runs [OmBt49CheckU.exe](#).

[OmBt49CheckU.exe](#) detects where the Brooktrout drivers are installed and creates the registry setting under modem key and creates firmload files in the \\brooktrout\bin folder.

When sending documents with greater than 30 pages the message goes to the Failure queue

Problem:

Brooktrout modems have a known problem with sending document with greater than 30 pages. That is why when sending documents with greater than 30 pages the message goes to the Failure queue even though all the pages in the document are delivered.

Solution:

The suggested workaround is to increase the maximum number of pages in BTcall.cfg parameter using the Brooktrout configuration tool.

To configure the maximum page size:

- 1 Click **START > ALL PROGRAMS > BROOKTROUT > BROOKTROUT CONFIGURATION TOOL**.
- 2 Select **BTCALL PARAMETERS (ALL BOARDS)**.
- 3 In the **Advances Settings** section, go to the **MAXIMUM NUMBER OF PAGES** option.
- 4 Set the value to **200**.
- 5 Save your changes.
- 6 Click **APPLY** to make the Brooktrout server read your changes.

While installing Boston v5.2.2 drivers after uninstalling Boston v5.1.3 drivers Dialogic services do not start

Problem:

When I install Boston v 5.2.2 drivers after uninstalling Boston v5.1.3 drivers, the Dialogic services do not start.

Solution:

It is possible that some components of the driver remain after you do uninstall Boston v5.1.3. To get around this issue, you must delete all registry keys that may contain associated metadata and reboot the system before installing Boston v5.2.2 driver.

Here are the steps:

- 1 Unisntall Boston v5.1.3 drivers using Add/Remove programs applet.
- 2 Verify Dialogic services are not present under services.
- 3 Click **START > RUN** and enter [regedit](#) to open the **Registry Editor**.

- 4** Navigate to **HKEY_LOCAL_MACHINE > SOFTWARE**.
- 5** Select the **Brooktrout** entry on the left side of the pane, right click and click Delete to delete this entry.
- 6** Navigate to **HKEY_LOCAL_MACHINE > SYSTEM > CURRENTCONTROLSET > SERVICES**.
- 7** Verify that the entry for `Boston.sys` does not exist. If it does, delete it.
- 8** Close the Registry Editor and reboot the system.
- 9** Install Boston v5.2.2 drivers.
The Dialogic services should start.

