
Embedded AccuRoute[®]

HP OXPd v1.4.4

Quick Start Guide

March 2013



Omtool, Ltd.

6 Riverside Drive
Andover, MA 01810
Phone: +1/1 978 327 5700
Toll-free in the US: +1/1 800 886 7845
Fax: +1/1 978 659 1300

Omtool Europe

25 Southampton Buildings
London
WC2A 1AL
United Kingdom
Phone: +44/0 20 3043 8580
Toll-free in the UK: +44/0 80 0011 2981
Fax: +44/0 20 3043 8581

Web: <http://www.omtool.com>

© 2013 by Omtool, Ltd. All rights reserved. Omtool, AccuRoute and the Company logo are trademarks of the Company. Trade names and trademarks of other companies appearing in this document are the property of their respective owners.

Omtool product documentation is provided as part of the licensed product. As such, the documentation is subject to the terms outlined in the End User License Agreement. (You are presented with the End User License Agreement during the product installation. By installing the product, you consent to the terms therein.)

Permission to use the documentation is granted, provided that this copyright notice appears in all copies, use of the documentation is for informational and non-commercial or personal use only and will not be copied or posted on any network computer or broadcast in any media, and no modifications to the documentation are made. Accredited educational institutions may download and reproduce the documentation for distribution in the classroom. Distribution outside the classroom requires express written permission. Use for any other purpose is expressly prohibited by law.

Omtool and/or its suppliers make no guaranties, express or implied, about the information contained in the documentation. Documents and graphics contained therein could include typographical errors and technical inaccuracies. Omtool may make improvements or changes to the documentation and its associated product at any time.

Omtool support and sales

Online resources

The Omtool web site provides you with 24-hour access to documentation, software updates and other downloads, and detailed technical information that can help you troubleshoot issues. Go to <http://www.omtool.com/support> and log in using your customer number. Then click one of the following:

- **Knowledge Base** to access technical articles.
- **Downloads & Docs** to access online documentation, software updates, and downloads.

Customer service and technical support

Contact Omtool Customer Service or Technical Support using any of the following methods:

- **Phone:** +1/1 978 327 6800 or +1/1 888 303 8098 (toll-free in the US)
- **Fax:** +1/1 978 659 1301
- **E-mail:** customerservice@omtool.com or support@omtool.com

Technical support requires an active support contract. For more information, go to <http://www.omtool.com/support/entitlements.cfm>.

Sales, consulting services, licenses, and training


Contact Omtool Sales using any of the following methods:

- **Phone:** +1/1 978 327 5700 or +1/1 800 886 7845 (toll-free in the US)
- **Fax:** +1/1 978 659 1300
- **E-mail:** sales@omtool.com

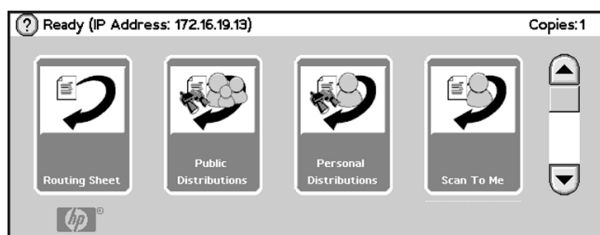
Using the Routing Sheet Option

A **Routing Sheet** is a special page with a barcode containing distribution instructions for your document.

With the **Routing Sheet** option, the device delivers the scanned document with a Routing Sheet to the AccuRoute server, which decodes the barcode and distributes the document to intended recipients.

- 1 Generate and print a Routing Sheet using the AccuRoute Web Client.
- 2 Assemble your document with the Routing Sheet at the front.
- 3 At the device, load the document into the document feeder or place it on the exposure glass. (Use the exposure glass only if scanning a single page.)
- 4 Press **Routing Sheet**. (If this option is not visible, find it using the scroll bar.)
- 5 Optionally, press **Options** to change scan settings (such as parameters for control over document routing and formatting).
- 6 Press  (**Start**) or **Scan** to begin scanning. A progress indicator will display.
- 7 Wait for the job to finish. (Alternatively, press **Cancel** to stop the scan job.)

When transfer is complete, a message indicates the job status.



- 8 To scan another document using the **Routing Sheet** option, press **Back**.

To end the session and return to the **Routing Sheet** screen, press **Completed**.

To end the session and return to the main AccuRoute menu, press **Exit**.

If **one touch scan** is enabled, document scanning starts. Go to Step 7.

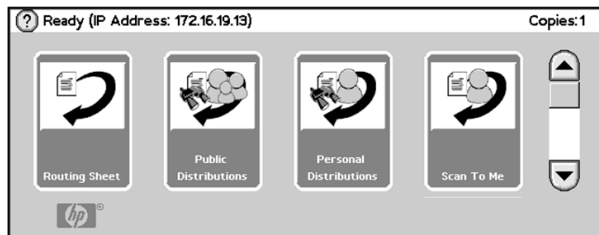
If **one touch scan** is NOT enabled (the default), the device shows the **Routing Sheet** screen. Continue with the next step.

Using the Public Distributions Option

A system administrator creates **Public Distributions** for use by a group. For example, all members of the marketing group may have a distribution predefined specifically for their use.

Using the **Public Distributions option**, the device delivers the document to the AccuRoute server, which decodes the distribution and sends the document to intended recipients.

- 1 Assemble your document and go to the device.
- 2 Press **Public Distributions**. (If this option is not visible, find it using the scroll bar.)



- 3 Select a distribution from the list of **Public Distributions**.
- 4 Load the document into the document feeder or place it on the exposure glass. (Use the exposure glass only if scanning a single page.)

- 5 Optionally, press **Options** to change scan settings (such as parameters for control over document routing and formatting).
- 6 Press **Start** or **Scan** to begin scanning. A progress indicator will display.
- 7 Wait for the job to finish. (Alternatively, press **Cancel** to stop the scan job.)

When transfer is complete, a message indicates the job status.

- 8 To scan another document using the same distribution, press **Back**.

To end the session and return to the **Public Distributions** screen, press **Completed**.

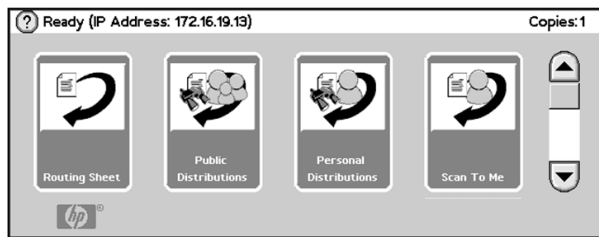
To end the session and return to the main AccuRoute menu, press **Exit**.

Using the Personal Distributions Option

Personal Distributions are created for use by an individual. For example, you may have a distribution defined for sending information to people within your company and another distribution for sending information outside the company. (Before using this option, you must create a Personal Distribution. Ask your system administrator for assistance.)

Using the **Personal Distributions** option, the device delivers the document to the AccuRoute server, which decodes the distribution and sends the document to intended recipients.

- 1 Assemble your document and go to the device.
- 2 Press **Personal Distributions**. (If this option is not visible, find it using the scroll bar.)



- 3 If prompted, enter user login information to access your **Personal Distributions**.
- 4 Select a distribution from the list of your **Personal Distributions**.
- 5 Load the document into the document feeder or place it on the exposure glass. (Use the exposure glass only if scanning a single page.)

- 6 Optionally, press **Options** to change scan settings (such as parameters for control over document routing and formatting).
- 7 Press **Start** or **Scan** to begin scanning. A progress indicator will display.

- 8 Wait for the job to finish. (Alternatively, press **Cancel** to stop the scan job.)

When transfer is complete, a message indicates the job status.

- 9 To scan another document using the same distribution, press **Back**.

To end the session and return to the **Personal Distributions** screen, press **Completed**.

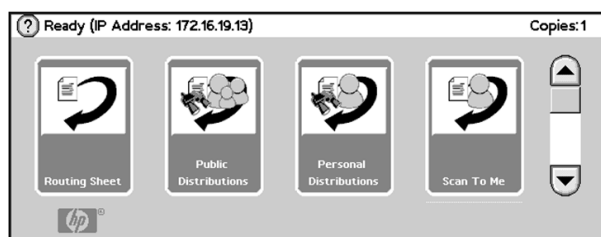
To end the session and return to the main AccuRoute menu, press **Exit**.

Using the Scan to Me Option

The **Scan to Me** option scans a document and delivers it to your PC for further review and routing. Based on a directive (a rule defined by a system administrator), the system sends the document to your e-mail address (the default) or to a Windows home folder.

Using the **Scan to Me** option, the device delivers the document to the AccuRoute server, which processes it using your personal directive and sends the document to intended recipients.

- 1 Assemble your document and go to the device.
- 2 Press **Scan to Me**. (If this option is not visible, find it using the scroll bar.)



- 3 If prompted, enter user login information to access the **Scan to Me** option.
- 4 Load the document into the document feeder or place it on the exposure glass. (Use the exposure glass only if scanning a single page.)

- 5 Optionally, press **Options** to change scan settings (such as parameters for control over document routing and formatting).
- 6 Press **Start** or **Scan** to begin scanning. A progress indicator will display.
- 7 Wait for the job to finish. (Alternatively, press **Cancel to stop the scan job.**)

When transfer is complete, a message indicates the job status.

- 8 To scan another document using the **Scan to Me** option, press **Back**.

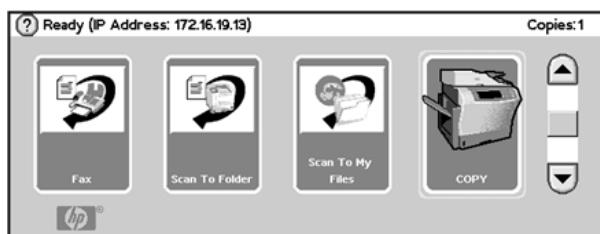
To end the session and return to the **Scan to Me** screen, press **Completed**.

To end the session and return to the main AccuRoute menu, press **Exit**.

Using the Fax Option

When you enter a fax number and scan your document using the **Fax** option, the device delivers the document to the AccuRoute server, which sends the fax to intended recipients.

- 1 Assemble your document and go to the device.
- 2 Press **Fax**. (If you do not see this option, find it using the scroll bar.)



- 3 Press the **Fax Number** text box and enter the destination fax number using the keypad that opens. Press **OK** to close the keypad.
 - ▶ If you do not enter a fax number, you will get an error message.
- 4 To fax without adding a cover sheet, press **Next**. Continue with Step 9.

To add a cover sheet, press the **Add Cover Sheet** text box. Continue with the next step.
- 5 Select **Yes** and **OK** to return to the **Fax** screen.
- 6 Press **Next** to display the **Cover Sheet** screen.
- 7 Enter information in the **Subject**, **Sender Name**, and **Recipient Name** text boxes. To do so, press the text

box, use the keypad, and press **OK** to close the keypad.

- 8 Press **Next** to display the **Fax** screen.
- 9 Load the document into the document feeder or place it on the exposure glass. (Use the exposure glass only if scanning a single page.)
- 10 Optionally, press **Options** to change scan settings (such as parameters for control over document routing and formatting).
- 11 Press **Start** or **Scan** to begin scanning. A progress indicator will display.
- 12 Wait for the job to finish. (Alternatively, press **Cancel** to stop the scan job.)


When transfer is complete, a message indicates the job status.
- 13 To scan another document using the **Fax** option, press **Back**.

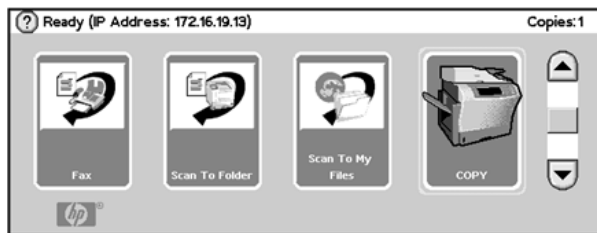
To end the session and return to the **Fax** screen, press **Completed**.

To end the session and return to the main AccuRoute menu, press **Exit**.

Using the Scan to Folder Option

Using the **Scan to Folder** option, the AccuRoute server sends the document to a folder predetermined by your system administrator.

- 1 Assemble your document and go to the device.
- 2 Load the document into the document feeder or place it on the exposure glass. (Use the exposure glass only if scanning a single page.)
- 3 Press **Scan to Folder**. (If this option is not visible, find it using the scroll bar.)
- 4 Optionally, press **Options** to change scan settings (such as parameters for control over document routing and formatting).
- 5 Press  (**Start**) or **Scan** to begin scanning. A progress indicator will display.
- 6 Wait for the job to finish. (Alternatively, press **Cancel** to stop the scan job.)



If **one touch scan** is enabled, document scanning starts. Go to Step 7.

If **one touch scan** is NOT enabled (the default), the device shows the **Scan To Folder** screen. Continue with the next step.

When transfer is complete, a message indicates the job status.

- 7 To scan another document to the specified network folder, press **Back**.

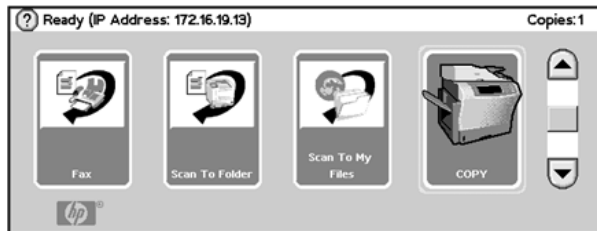
To end the session and return to the **Scan to Folder** screen, press **Completed**.

To end the session and return to the main AccuRoute menu, press **Exit**.


Using the Scan to My Files Option

Using the **Scan to My Files** option, the device delivers the scanned document to the AccuRoute server, which sends it as an electronic file to the “My Files” folder on the Client.

- 1 Assemble your document and go to the device.
- 2 Press **Scan to My Files**. (If this option is not visible, find it using the scroll bar.)



- 3 If prompted, enter user login information to access your **My Files** options.
- 4 Load the document into the document feeder or place it on the exposure glass. (Use the exposure glass only if scanning a single page.)

- 5 Optionally, press **Options** to change scan settings (such as parameters for control over document routing and formatting).
- 6 Press  (**Start**) or **Scan** to begin scanning. A progress indicator will display.
- 7 Wait for the job to finish. (Alternatively, press **Cancel** to stop the scan job.)

When transfer is complete, a message indicates the job status.

- 8 To scan another document using the same option, press **Back**.

To end the session and return to the **Scan to My Files** screen, press **Completed**.

To end the session and return to the main AccuRoute menu, press **Exit**.