
HP Capture and Route (HP CR) Release Notes

The Release Notes contain information on new features and enhancements for HP CR:

- [HP CR v1.2.0](#) (1)
- [HP CR v1.1](#) (13)

Each version release is cumulative. For example, HP CR v1.2.0 contains all the new features and enhancements that were included in the HP CR v1.1 release.

HP CR v1.2.0

Product: HP Capture and Route (HP CR) v1.2.0
Release date: October 2012

Client versions in HP CR v1.2.0

Table 1 Client versions in HP CR v1.2.0

| Client | Version |
|--------------------------------|---------|
| HP OXPd 1.4 | 1.4.3 |
| HP OXPd 1.6 | 1.6.4 |
| End User Interface | 1.2.0 |
| HP CR for Microsoft Sharepoint | 1.2.0 |
| HP CR for Autonomy WorkSite | 1.2.0 |

Overview of features

The following is a summary of features specific to HP CR v1.2.0:

Table 2 HP CR v1.2.0 Features

| Feature | Description |
|--|--|
| HP CR Server | |
| Connectors | WorkSite (DMS) and XMLScan connectors are automatically installed with the HP CR server. |
| Capture and use of login credentials | HP CR can capture a user's name and password (when logging on in on the Device) and then use the credentials to log in as that user when uploading the delivered document to a network folder. |
| Additional Composer delivery formats | TIFF and JPEG single-page images are supported as final file formats for delivery from the Compose component (Composer). |

| Feature | Description |
|--|---|
| OCR language support | Common, extended, and custom languages are user-selectable with HP CR v1.2.0. |
| Device management using the HP CR Server Administrator | The HP CR Server Administrator Devices node gives the administrator the ability to use a graphical interface to manage devices and create groups of devices with customized buttons. |
| End User Interface management using the HP CR Server Administrator | The HP CR Server Administrator Web Client Views node gives the administrator the ability to use a graphical interface to manage End User Interface settings. |
| FTP and FTPS support | The HP CR Groups > Folder tab will use the Filescan connector to store documents to a network folder using FTP (file transfer protocol) and FTPS (secure FTP). The system administrator can specify a generic, default user name and password to use when logging into an FTP location. |
| HP CR Clients | |
| Localized clients and device buttons | HP CR, device clients, and standard device buttons have been localized for Simplified Chinese, French, German, Italian, Brazilian Portuguese, and Spanish. |
| Scan Preview (FutureSmart Devices) | HP CR v1.2.0 supports the ability to use native device scan image preview in the device control panel before releasing the scan for processing and delivery through the HP CR server. |
| HP CR for Autonomy WorkSite | HP CR integrates with Autonomy iManage WorkSite, allowing direct scanning and document upload into WorkSite document libraries. |
| New devices | Newly supported devices are: <ul style="list-style-type: none"> • Color M775 • Color M575 MXP • M525 MXP |
| Software Technology Integrations | |
| HP Access Control | HP CR is integrated with HP Access Control (HP AC). After HP AC is used to authenticate a user at a device, HP CR is used to log information into a database for HP Access Control to run queries against. |
| HP Autonomy TeleForm | HP CR integrates with HP Autonomy TeleForm, a software-based solution for document capture used to extract and validate information from complex, forms-related documents. Documents captured through HP CR can be transferred to TeleForm for processing. |

Connectors

Connectors are the means by which messages enter and leave the HP CR server. In addition to the connectors listed for HP CR v1.1, the following are automatically installed with the HP CR server:

- WorkSite (DMS) connector, which is used for [HP CR for Autonomy WorkSite](#).
- XMLStore and XMLScan connectors, which are used for [HP Autonomy TeleForm](#).

Capture and use of login credentials

In certain capture scenarios it is desirable for the HP CR server to impersonate the user who has submitted the document for processing when uploading that document to network storage. When a user logs into a device and provides both a network user name and password, the HP CR captures those credentials in a secure manner and passes them to the HP CR server. The server can then use the credentials to log in as that user when uploading the delivered document to a network folder.

NOTE: Capture and use of login credentials requires configuration for the device buttons as well as the correct permissions for the account used in delivering to the network storage.

Additional Composer delivery formats

The Compose component (Composer) can deliver the original format or convert input (source) files from one file type into another file type (final file format). In addition to the final formats listed for HP CR v1.1, HP CR v1.2.0 also supports:

- TIFF (image, single-page)
- JPEG (image, single-page)

To enable the new options:

1. Launch HP CR Server Administrator.
2. Expand the tree view in the left pane. Click **Configuration**.
3. In the right pane, double-click on the **Default** group (or applicable group).
4. Click the **Clients** tab.
5. Select the recipient type (such as E-mail) in the **Allow group to route to** section.
6. Click the **Configure** button.
7. Click the **Final Forms** tab.
8. Select the final forms to which the client can send. Select **S.JPG** and/or **S.TIF** for the new options.
9. Click **OK** twice to save your changes.

OCR language support

The HP CR server supports the following languages that can be specified for optimized OCR output. (The details for setting up the user selected language workflow to use this feature are provided in the [HP Capture and Route \(HP CR\) Installation Guide](#).)

- **Common languages**

| | | | |
|----------------------|--------|------------------------|---------|
| English | French | Italian | Spanish |
| Chinese (Simplified) | German | Portuguese (Brazilian) | |

- **Extended OCR languages**

| | | |
|---------------------------------|--------------------|-----------------------|
| Bulgarian | Finnish | Polish |
| Chinese (Traditional) | Greek | Portuguese (European) |
| Chinese (Simplified) + English | Hungarian | Romanian |
| Chinese (Traditional) + English | Indonesian | Russian |
| Czech | Japanese | Slovak |
| Danish | Japanese + English | Swedish |
| Dutch | Norwegian | Turkish |

- **Custom OCR languages**

| | | |
|--------------------|-----------------------|---------------------|
| Armenian (Eastern) | Croatian | Norwegian (Bokmal) |
| Armenian (Grabar) | Dutch Belgian | Norwegian (Nynorsk) |
| Armenian (Western) | Estonian | Slovenian |
| Bashkir | German (New Spelling) | Tatar |
| Catalan | Lithuanian | Ukrainian |

Device management using the HP CR Server Administrator

In previous releases of HP CR, the system administrator completed system configuration of the device client for customized options by manually editing the device client XML configuration file. With HP CR v1.2.0, the system administrator uses the graphical user interface of the System Administrator to manage any configurable setting.

End User Interface management using the HP CR Server Administrator

In previous releases of HP CR, End User Interface settings were handled through an XML configuration file. HP CR v1.2.0 provides the system administrator with the ability to configure commonly used End User Interface settings using the graphical user interface of the System Administrator client. Use the Administrator Web Client Views Management tool for:

- Setting a default Routing Sheet template for the Scan to My Files feature
- Making Routing Sheet templates available for Personal and Public Distributions and setting a default template

Typically, the default Routing Sheet template for Personal and Public Distributions is different from the template used for the Scan to My Files feature.

- Making fax cover page templates available and setting a default template
- Setting the tabs/folders that are enabled and visible to the user, and specifying which tab/folder is set as the default folder opened when a user opens the End User Interface
- Using the OCX for Address Book browsing

FTP and FTPS support

The HP CR **Groups > Folders** tab can be configured with an FTP(S) location that will use the Filescan connector to store documents to a network folder using FTP (file transfer protocol) and FTPS (FTP that supports the Transport Layer Security (TLS) and Secure Sockets Layer (SSL) protocols). The system administrator can specify a generic, default user name and password to use when logging into an FTP location.

FTP and FTPS support requires:

- FTP server
- HP CR End User Interface client
- HP MFP device configured with the Embedded Device Client for HP OXPd (any model)

Localized clients and device buttons

HP CR, device clients, and standard device buttons have been localized for Simplified Chinese, French, German, Italian, Brazilian Portuguese, and Spanish. Localization includes:

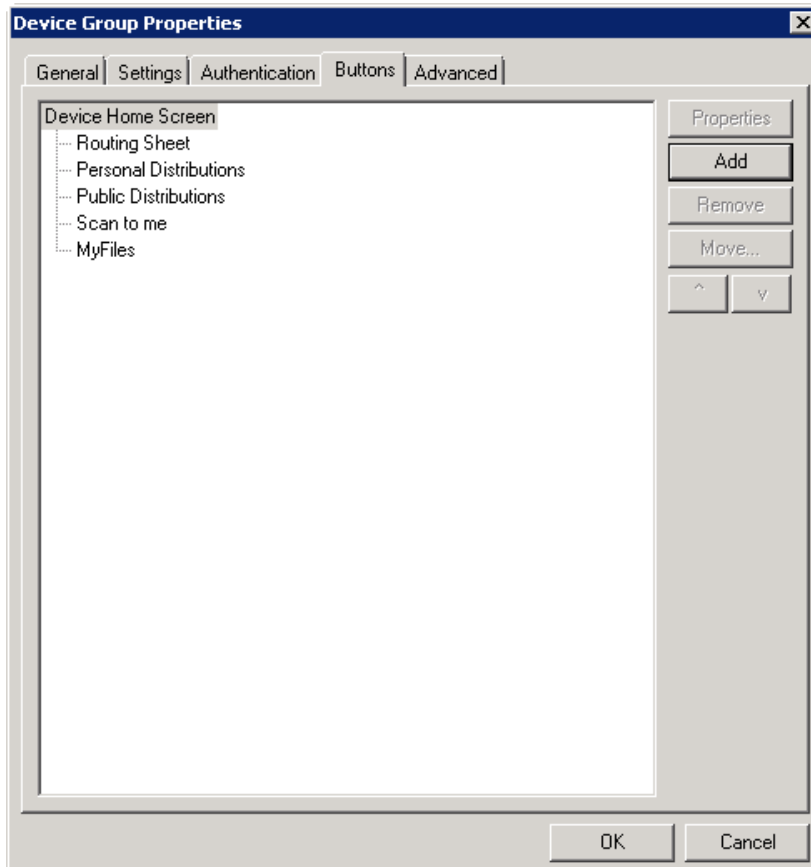
- HP CR End User Interface and the [HP Capture and Route \(HP CR\) User Guide](#).
- HP CR for HP OXPd v1.6 Device Client and the associated [Quick Start Guide](#).
- HP CR for HP OXPd v1.4 Device Client and the associated [Quick Start Guide](#).
- HP CR for Microsoft SharePoint and the associated [Quick Start Guide](#).
- HP CR for Autonomy WorkSite and the associated [Quick Start Guide](#).

Standard device buttons have been localized. Note, however, that the Administrator can modify the text as it appears on a device button. These buttons will not appear as localized unless the Administrator enters the text in the applicable language.

Scan Preview (FutureSmart Devices)

Users scanning with Embedded Device Client for HP OXPd v1.6 can now utilize the native **HP Scan Preview** feature. A system administrator can configure the **Scan Preview** using the HP CR Server Administrator:

1. Launch HP CR Server Administrator.
2. Expand the tree view in the left pane. Click **Devices**.
3. Right-click on a group name and select **Properties**. The **Device Group Properties** page displays.
4. Click on the **Buttons** tab.



5. Select a button and click **Add**. The **Button Properties** page is displayed.
6. Select the **Enable scan preview by default (only on supported devices)** option and click **OK**.

Button Properties

General | Job Properties | Prompts | Device Settings

Type: Routing Sheet

Name: Routing Sheet

Display Text: @buttonroutingsheetText

Description: @buttonroutingsheetDesc

Image: routingsheet

Location:

- Auto assign based on configured ordering
- Use specific ordering priority:

Options:

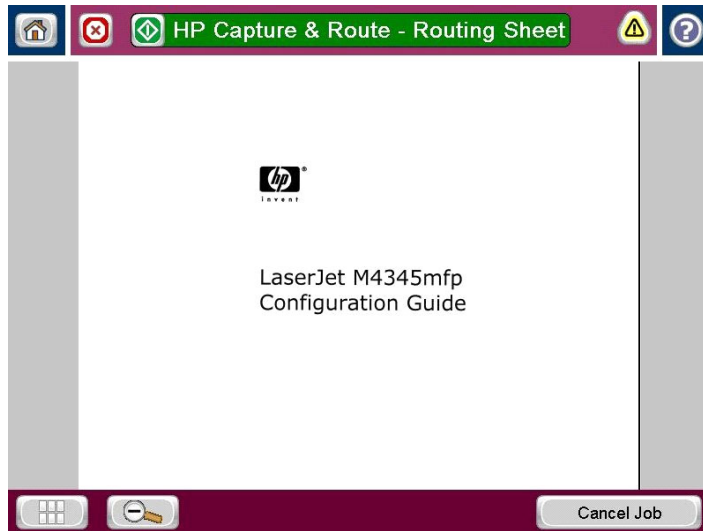
- Enable this button for use on the device
- Enable job build
- Enable One-Touch scanning
- Enable scan preview by default (only on supported devices)
- Require authentication
 - Capture user password

OK Cancel

Before the Scan is released from the device, the user can:

- Scroll through the entire document
- Zoom in to verify the quality of the image
- Cancel if the document is not to be sent to the HP CR server

Once verified, click the green **HP Capture & Route** button at the top of the screen to finish routing the document to the HP CR server.



HP CR for Autonomy WorkSite

HP CR v1.2.0 now has the WorkSite connector as a supported DMS connector that will route messages to Autonomy iManage WorkSite. This is a server side feature. HP CR for Autonomy WorkSite is installed on end user desktops that have been configured with iManage FileSite v8.5-9.0 or iManage DeskSite v8.5-9.0.

HP CR for Autonomy WorkSite enables users to import hardcopy documents into WorkSite libraries. The process is driven from the native WorkSite user interface using its screens and menus. HP CR can convert the scanned documents into text-searchable format (PDF or DOC), and then save the resulting document into the proper WorkSite library, fully profiled and stored alongside other electronic content. Once imported, you can browse through the document libraries to locate these documents, or use WorkSite enterprise search capabilities.

A user within the iManage FileSite or DeskSite client interface can select an **Import Scan** option to specify profile information for the document that will be scanned later. When the document is scanned, it is uploaded to iManage in the target folder with the specified profile information. The scan can be accomplished using an HP MFP or other network-connected scanning device.

The **Send to HP CR** option also is available from iManage FileSite or DeskSite. With this option, a user can extract one or more documents from the iManage repository and have these documents uploaded and attached to a new message composed using the HP CR End User Interface.

New devices

HP CR now support these devices:

- Color M775
- Color M575 MXP
- M525 MXP

HP Access Control

The integrated HP CR and HP AC solution provides for:

- “Advanced” single-sign between HP AC and HP CR. This includes the ability for HP AC to capture a user’s network password and then securely transfer that password to HP CR. From that point, HP CR could use the name and password of the logged in user to upload documents to SharePoint or store documents in a network folder as that user.
- Transfer of job accounting details from HP CR to HP AC. The following job accounting details on each job processed through HP CR are captured and made available for import into the HP AC system:
 - Master Job ID
 - Source scanning device or fax channel, if known
 - Source originating user, if known
 - Date/time of submission for processing
 - Date/time of completion of processing
 - Final delivery status (success, failure, reason for failure if applicable)
 - Size of documents submitted, delivered, expressed in pages
 - Size of documents submitted, delivered, expressed in bytes
 - Delivery destination type (for example, fax, email, folder, SharePoint, etc.), delivery address (such as 1-800-555-1212, user@company.com, etc.)

Any individual job may be delivered to multiple individual recipients. A separate job tracking record is captured and transferred for each recipient. All deliveries for a single, submitted job share a common master job ID.

It is not necessary for the HP CR and HP AC servers to install and run together on the same Windows server.

HP Autonomy TeleForm

HP Autonomy TeleForm is a software-based solution for document capture used to extract and validate information from complex, forms-related documents. HP CR integrates with TeleForm so that documents captured through HP CR can be transferred to TeleForm for processing. HP CR also has the ability to receive documents and meta-data sent to HP CR from TeleForm so that HP CR can deliver the content to one or more intended destinations.

The XMLScan and XMLStore connectors enable HP CR to support integration with HP Autonomy TeleForm. HP CR and TeleForm integration:

- Uses HP CR’s XMLScan connector to receive documents and meta-data which have been exported from TeleForm. An XSLT translation parses the XML sent back from TeleForm and maps this information to appropriate properties of the job created on the HP CR server. HP CR then processes the returned job based on these properties and routes it to its intended destination(s).
- Uses HP CR’s XMLStore connector to output scanned documents and meta-data to a target network folder which is monitored by TeleForm as a source for incoming documents to process. The XMLStore is configured to use an XSLT, which formats the output meta-data from the HP CR server in a documented format that can be parsed and imported to TeleForm.

Known Issues

Table 3 Known issues in HP Capture and Route v1.2.0

| Observation | Solution |
|--|---|
| AR-2449 and 2846: A 'NetShareAdd' error appears in the application event log after upgrading from HP CR v1.1 to HP CR v1.2.0. | You can safely ignore this message. |
| AR-2526: The End User Interface does not display the MS Outlook Address book for email recipients. | The addressbook.ocx does not support Internet Explorer 9. Downgrading to an earlier version of IE is suggested if the addressbook is required. |
| AR-2847: Users are able to access the User Interface, even though the permissions are disabled. | |
| AR-2850: After installing the HP OXPd v1.4 device client the Scan to Distribution is not displayed. | This feature is not supported in this release of HP CR. |
| AR-2856: The browse option for the HP LANFax printer defaults to the Desktop. In order to populate this field with a printer, the path must be manually added. | <p>Follow these steps:</p> <ol style="list-style-type: none"> 1. Add the Local printer and share it. 2. Launch HP CR Administrator. 3. Navigate to Connectors>> HPLan Fax Connector. 4. Double-click on the connector. The Properties for HPLan Fax dialog is displayed. 5. Click the Configure button. 6. Click on the Additional Notification tab. 7. An option to add Additional recipient to receive Notifications is displayed. Enable the check box to Override server's profile settings and click Add. 8. The Add recipient dialog box is displayed. Select Printer from the drop-down and select the Always Send notification radio button. 9. Enter the UNC path (\\Servername\Configured shared printer name) or IP address (IP:111.222.33.44) and click OK three times. |
| AR-2862: %SENDER_BUSINESS_ADDRESS% , %SENDER_BUSINESS_CITY% , %SENDER_BUSINESS_STATE% are not replaced when used on a Coverpage delivered from device client. | |

| Observation | Solution |
|--|---|
| AR-2863: User supplied credentials are not being used for documents sent with the 'Scan to Folder' button. | <p>Follow these steps:</p> <ol style="list-style-type: none"> 1. From the Admin Rules, select the ScanToFolder rule. 2. Click Next until you pass the Specify Criteria for Rule dialog. 3. Click on the Route to Filescan on the Server text and select Properties. 4. Alter the destination to be the folder you want. For a specific account, this needs to be a file share starting with \\ 5. Click the Advanced button. 6. Click the Custom Properties button. <p>(continued on the next page.)</p> |
| | <ol style="list-style-type: none"> 7. Add the Core properties as shown below. Make sure there are no spaces at the end of the property names. <p>prGroupFolderType needs to be 0 for a UNC folder.</p> <p>prGroupFolderUseAcct should be 1 to specify that a specific account is going to be used.</p> <p>prUserName and prPassword should be set to appropriate credentials for the folder.</p> |
| AR-3059: Using HP AC authentication at the device with the Scan to Me button, documents fail to route. | Configure the Scan to Me button with the Capture User Password option selected. |

Resolved Issues

Table 4 Resolved Issues in HP Capture and Route v1.2.0

| Resolved issue | Notes |
|--|---|
| 662: Custom properties do not support the Boolean type option. | |
| 1147: For Embedded Device Client for HP OXPd v1.4 installation, when authentication type Pin with Password is selected, the configuration.xml file must be modified to display the correct label. | The configuration.xml does not apply to HP CR v1.2.0. |
| 1339: Public Distributions are not found when the Public Distribution button is selected from the device. | |

Limitations

Table 5 Limitations in HP Capture and Route v1.2.0

| Limitation | Notes |
|---|--------------|
| If Omtool AccuRoute buttons exist on the device, HP CR buttons will overwrite them during installation. | |

Related Documentation for HP CR v1.2.0

- [HP Capture and Route \(HP CR\) Installation Guide](#)
- [On-line help for the Administrator](#) (procedures for installing, uninstalling, and troubleshooting are included)
- [HP Capture and Route \(HP CR\) Embedded Device Client for HP OXPd Installation Guide](#)
- [HP Capture and Route \(HP CR\) for HP OXPd v1.6 Device Client Quick Start Guide](#)
- [HP Capture and Route \(HP CR\) for HP OXPd v1.4 Device Client Quick Start Guide](#)
- [HP Capture and Route \(HP CR\) for Microsoft SharePoint Quick Start Guide](#)
- [HP Capture and Route \(HP CR\) for Autonomy WorkSite Quick Start Guide](#)
- [HP Capture and Route \(HP CR\) User Guide](#)

HP CR v1.1

Product: HP Capture and Route (HP CR) v1.1
Release date: April 2012

Overview

The HP Capture and Route solution (also referenced as HP CR) is a server-based software application for document capture, which operates on a Microsoft Windows server within a customer's network. Users can access HP CR's document capture and routing capabilities from any scan-enabled MFP or network-connected scanner. HP CR converts captured documents into a variety of image- and text-based document formats and delivers them to a wide range of destinations.

Documents are transferred from a web-based End User Interface, MFP, or network scanner to the HP CR server, which processes and delivers them to specified destinations. If the device used to scan a document is an HP device enabled with the HP OXPd embedded platform, and the capture function or document process requires it, the user may be prompted at the time of scanning to enter indexing metadata or recipient addressing information. Certain document processes may also specify that a user receive notification upon final job delivery through the system. Notification messages can be sent to the scanning user's email address or as a confirmation page printed back to the source scan device if that device is an MFP and capable of printing these confirmations.

Connectors

- **Database** – Allows the HP CR server to route inbound messages (documents and faxes) to a SQL database.
- **DMS SharePoint** – Allows the HP CR server to route messages to document management systems (DMSs), supporting MS SharePoint® 2007/2010.
- **Filescan** – Allows the HP CR server to route messages to and from a specified network folder (the Filescan folder). Supports both inbound and outbound messages.
- **FileShare** – Allows the HP CR server to route messages to a specified network folder (the FileShare folder). Supports outbound messages.
- **HP LAN Fax** – Allows the HP CR server to send outbound fax messages from an HP Device to the HP CR server for outbound fax delivery.
- **Printer** – Allows the HP CR server to route documents and faxes to printers in the local area network.
- **SMTP** – Allows the HP CR server to communicate with the Simple Mail Transport Protocol (SMTP) mail server. Supports both inbound and outbound messages.
- **Server** – Allows the HP CR server to manage communication between the server and its connectors. Supports both inbound and outbound messages. (Note: All servers require the server connector.)
- **Telco T.37 (Fax)** – Uses Simple Mail Transport Protocol (SMTP) to generate fax messages conforming to the T.37 protocol. Allows you send outbound fax messages as an email to another fax server or fax service provider that accepts T.37 SMTP messages.
- **Telco** – Allows the HP CR server to send and receive faxes. The Telco connector works in conjunction with the modem server software that is installed in the HP CR server. Supports outbound messages only.
- **XMLStore** – Picks up and processes the XML documents and submits them to the HP CR server for delivery to the intended recipients.

Components

- **Compose** – Converts messages and documents into the appropriate format for delivery.
- **Data Extractor** – Allows for the extraction and mapping of barcode data from documents that pass through the HP CR. The Data Extractor allows the CR server to read and process barcoded cover sheets (or separator pages) generated by third party systems.
- **Dispatch** – Determines the appropriate delivery method for all messages–inbound and outbound.
- **Embedded Directive Manager** – Detects, decodes, and applies Embedded Directives.
- **Lookup Manager** – Performs an inbound lookup on a received fax number and finds the appropriate recipient for the inbound fax.
- **Maintenance** – Performs archiving and cleanup functions on the HP CR server.
- **Notification** – Generates and sends notification messages from the HP CR server to the email accounts of message senders and recipients when important events occur during the processing of a message.
- **Preview Manager** – Determines whether or not a message needs to be previewed before the HP CR server continues processing it for delivery.

Third Party Software

Installed

The following third party software is installed:

- Apose.Words 10.8.0.0
- Apose.Slides 5.8.0.0
- Apose.Cells 7.0.3.0
- Apose.Diagram 1.7.0.0
- ABBYY FineReader 10.0.7
- Datalogics APDFL 9.1.0PlusP4b
- InliteResearch ClearImage 7.0.3189
- Ghostscript 9.01

Available

The following third party fax drivers are available:

- Dialogic Brooktrout x64 components v6.4.0 x64

End User Interfaces

- Embedded Device Client for HP OXPd v1.4
- Embedded Device Client for HP OXPd v1.6
- HP CR Client v1.1
- HP CR for Microsoft SharePoint v1.1

Known Issues

Table 6 Known Issues in HP Capture and Route v1.1

| Observation | Solution |
|---|---|
| 551: When adding a Network folder recipient to a Routing Sheet, the recipient is not displayed on the Routing Sheet. | On the HP CR server, open the <code>\Languages\ENU\EmbeddedDirectives</code> directory and select the Routing Sheet template (.doc can be opened in MS Word, .OMTPL can be opened in Wordpad). Add the following variable in the recipient list section: <code>%UNC_DISPLAY_DESTINATION.1%</code> |
| 613: Inbound faxes end up in the General Failure queue. | Verify that Capture DTMF is disabled and that Capture DNIS is enabled. |
| 615: When using the HP LANFax Connector, .DAT and .000 files remain in the LANFax/In directory indefinitely. | Verify that all devices being used by the HP LANFax Connector do not support Notifications. |
| 640: The XMLStore connector has a sample XSLT file available for use. | It is recommended to contact HP for technical assistance when implementing custom XSLT files. |
| 767: Query fails with the message, <i>Device model not supported</i> , when adding a device in the HP OXPd v1.4. | Verify that the device model being added is a Group 10 Device as listed in the supported devices section of the <i>HP CR Installation Guide</i> . |
| 869 -870 -1144: Truncation issues may appear on the fax confirmation options when using the HP OXPd v1.4 device client localized for Spanish. | Noted for information only. A solution is not applicable. |
| 1147: For HP OXPd v1.4 device client installation, when authentication type Pin with Password is selected, the configuration.xml file must be modified to display the correct label. | Open the configuration.xml file. Locate the line: <code><Label>@labeluser</Label></code> Change it to: <code><Label>@labelPIN</Label></code> |
| 1219: In Windows 2003 x64 environments, the demonstration license expiration warning message will not appear after the license has expired. | Noted for information only. A solution is not applicable. |
| 1326: Scanned files do not appear on the HP CR server and remain in the FilePosting directory. The HP CR server does not recognize files from devices configured with IPV6. | Reset the device to use IPV4 and rescan your documents. |
| 1339: Public Distributions are not found when the Public Distribution button is selected from the device. | Verify that the entire email address, which is specified in the <code><ApplicationTag></code> in the GroupED node, is all lowercase. |

Limitations

Table 7 Limitations in HP Capture and Route v1.1

| Limitation | Notes |
|--|--|
| 593 and 615 : When using the HP LANFax Connector, .DAT and .000 files remain in the LANFax/In directory indefinitely. | Typically, these notification files are deleted by the device, but some devices allow the user to request no confirmation and this will cause the .DAT and .000 files to remain in place. |
| 606: Compressed file size results will vary depending on the final form type. | It is expected that a file converted to PDF will be smaller in size than the same document converted to OCR.PDF, due to the text layer of the document. |
| 631: Color documents converted with Aspose can result in some areas appearing black. | |
| 662: Custom properties do not support the Boolean type option. | It is recommended to select the String type when creating custom properties in routing rules. |
| 687: When viewing public or personal distributions from the device, where the distribution was created in Microsoft SharePoint and the document libraries contained special characters, the library name is displayed on the device excluding the special characters. | This works within the limitations of Microsoft SharePoint. |
| 688: When a document library name is modified, any Routing Sheets created after the name change will still display the original name on the Routing Sheet DMS destination. | This works within the limitations of Microsoft SharePoint. |
| 785: The OCR conversion supports a watermark on the following final formats: <ul style="list-style-type: none"> Watermark is applied for PDF (OCR text) and PDF (OCR Image+text) Watermark is applied for PDF/A (OCR text) and PDF/A (Image+OCRtext) | Watermark cannot be applied to: <ul style="list-style-type: none"> Doc(OCR Text) Docx(OCR Text) RTF(OCR Text) TXT(OCR Text) XLS(OCR Text) XLSX(OCR Text) |
| 846: When PDF and Tiff source files are composed to XLS(OCR text) and XLSX(OCR text), the output files contain only the tables (if present in the source file). Text apart from the tables is not present. | <ol style="list-style-type: none"> When a source file with a table and text is composed, the output file contains only the table. When a source file with only text is composed, the output file is blank. |
| 951: The HP SharePoint extensions can only be available to one site per installation. | If you wish to change the site where the HP SharePoint extensions are displayed, uninstall and reinstall with the new location specified. |

Related Documentation for HP CR v1.1

- [HP Capture and Route \(HP CR\) Installation Guide](#)
- [On-line help for the Administrator](#) (procedures for installing, uninstalling, and troubleshooting are included)
- [HP Capture and Route Quick Start Guides for HP OXPd v1.6 Device Client Quick Start Guides](#)
- [HP Capture and Route Quick Start Guides for HP OXPd v1.4 Device Client Quick Start Guides](#)
- [HP Capture and Route Quick Start Guides for HP CR for Microsoft SharePoint Quick Start Guides](#)
- [HP Capture and Route \(HP CR\) User Guide](#)