

## Using the Open in AccuRoute® Desktop Feature

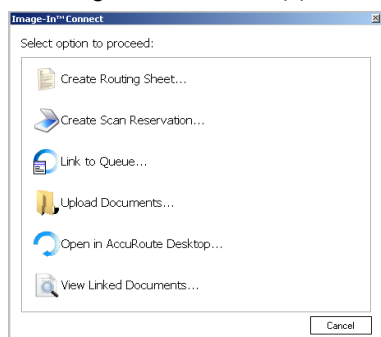
When the user selects the Open in AccuRoute Desktop option in Image-In Connect, an Embedded Directive is created using the current contents of the fields that are mapped for metadata collection. The AccuRoute Desktop Client application opens where the newly created Embedded Directive is listed. The user can of save the Embedded Directive as is, or the user can modify the directive as needed before saving it.

The Embedded Directive can be accessed from the AccuRoute Desktop Client, the AccuRoute Web Client and also from multifunction peripherals (MFPs). It is usually listed at the top of directives list available for use.

### To use the Open in AccuRoute Desktop feature:

- 1 In the external application, click the Image-In Connect icon in the title bar.

The **Image-In Connect** application opens.

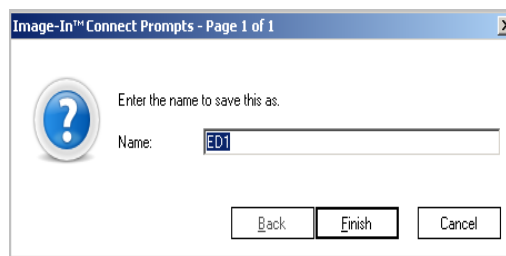


► Depending on your Image-In Connect configuration, you will see all or just a few of the options listed here.

- 2 Choose the **OPEN IN ACCURROUTE DESKTOP** option. If you are not configured to use prompts, the AccuRoute Desktop Client opens, listing the Embedded Directive. Go to step 4.

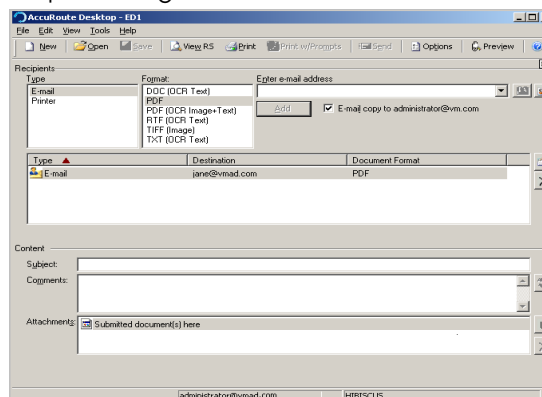
Alternately, if the Administrator has configured the use of prompts, the **Image-In Connect**

**Prompts** page opens, asking you to enter the name.



- 3 In the **NAME** text box, enter the name of the Embedded Directive.

The AccuRoute Desktop Client application opens listing the Embedded Directive.



- 4 Modify and save the Embedded Directive.